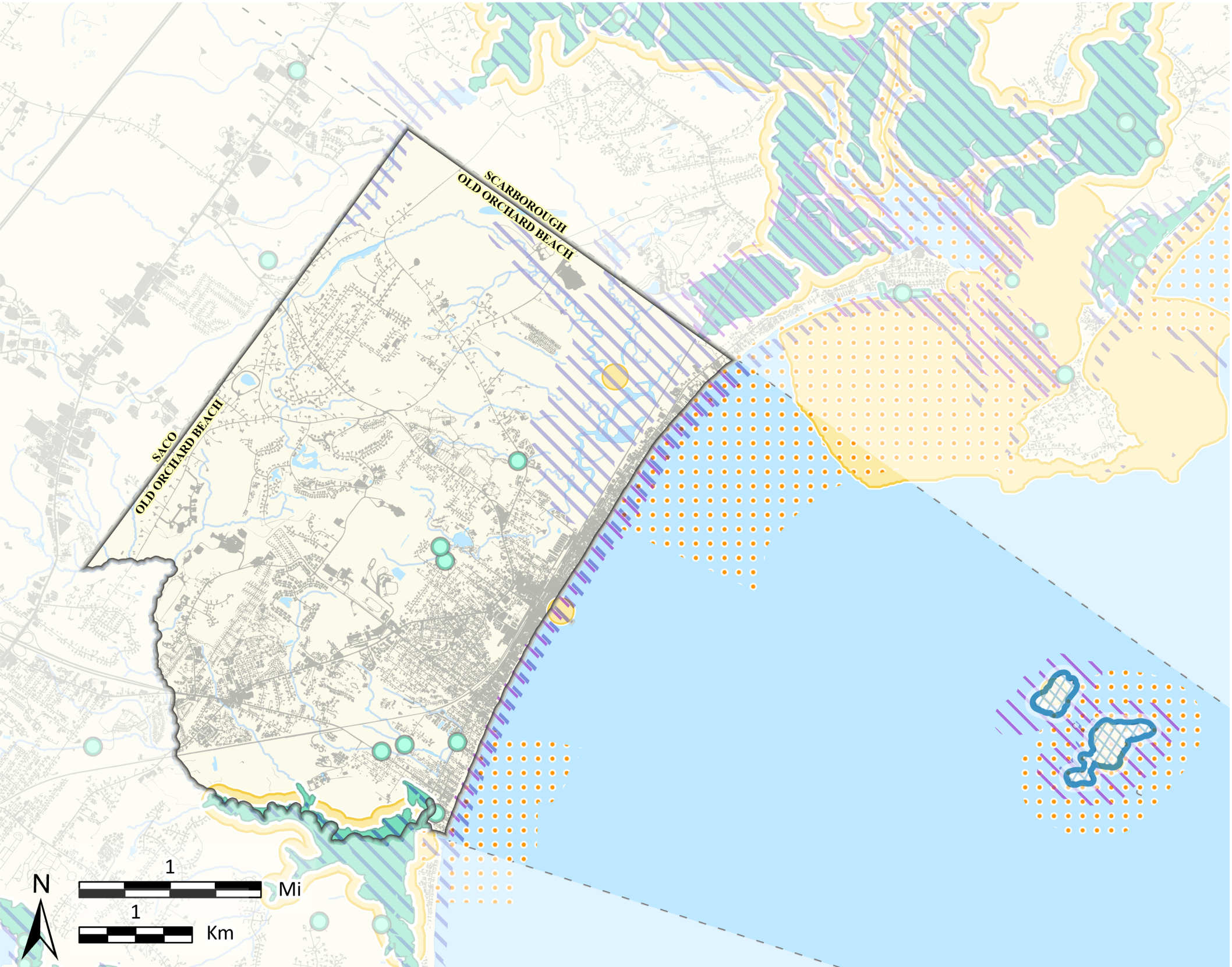


# Old Orchard Beach

## High Value Plant and Animal Habitats



This map is nonregulatory and is intended for planning purposes only



- Organized Towns

Developed

Rare or Endangered Wildlife\*

Endangered, Threatened, or Special Concern Species

Roseate Tern, Piping Plover & Least Tern

Rare or Exemplary Plants and Natural Communities

Rare Plant Locations

Rare and Exemplary Natural Communities

Significant Wildlife Habitat

Seabird Nesting Island

Inland Waterfowl and Wading Bird Habitats

Tidal Waterfowl and Wading Bird Habitats

Shorebird Areas
- Impervious surfaces such as roads and buildings.

Mapped observations of rare wildlife species.

Nesting, feeding, brood & rearing sites. Areas are identified based on species observations and confirmed habitat use.

Known rare, threatened, or endangered plant occurrences are based on field observations.

Mapped features are based on field surveys and aerial photo interpretation.

An island, ledge, or portion thereof in tidal waters with documented, nesting seabirds or suitable nesting habitat for endangered seabirds.

Breeding, migrating/staging, or wintering areas for inland waterfowl or breeding, feeding, loafing, migrating, or roosting areas for wading birds.

Breeding, migrating/staging, or wintering areas for coastal waterfowl or breeding, feeding, loafing, migrating, or roosting areas for coastal wading birds.

Shorebird feeding and roosting areas.